

Bakit 98 Auto-backup Utility for Windows 95/NT Zip Drives

vAlpha 1.0 July, 1998: Shareware

This is a temporary help file whilst I figure out how to make Windows context-sensitive help files. Please note that the software is an alpha version!

The program is pretty simple. It allows a user to maintain lists of working directories that the user backs up to a Zip drive on a fairly regular basis. The console has 2 windows, the left window displays the system, the right window displays the back-up list. To add a directory to the back-up list, the user simply left-clicks the directory name in the left window to select the directory, and then right-clicks the name to add it to the back-up list. To remove a directory from the back-up list, the user simply right-clicks on the directory name in the right-hand window.

The program is designed so that the directories in the list automatically back-up to the zip drive at shut-down (if the program is enabled), or the user can back up the list at any time by using the menu or toolbar.

The user can also create files that contain different lists of directories for back-ups. The files are stored in the Bakit98 directory, and are designated name.lst.

The program creates an icon in the users startup folder, and thus loads whenever the user starts the machine. The program starts "Enabled", depicted by the padlock symbol in the taskbar. If the user right clicks the padlock, the pop-up menu with program options appears. The menu options and brief explanations follow:

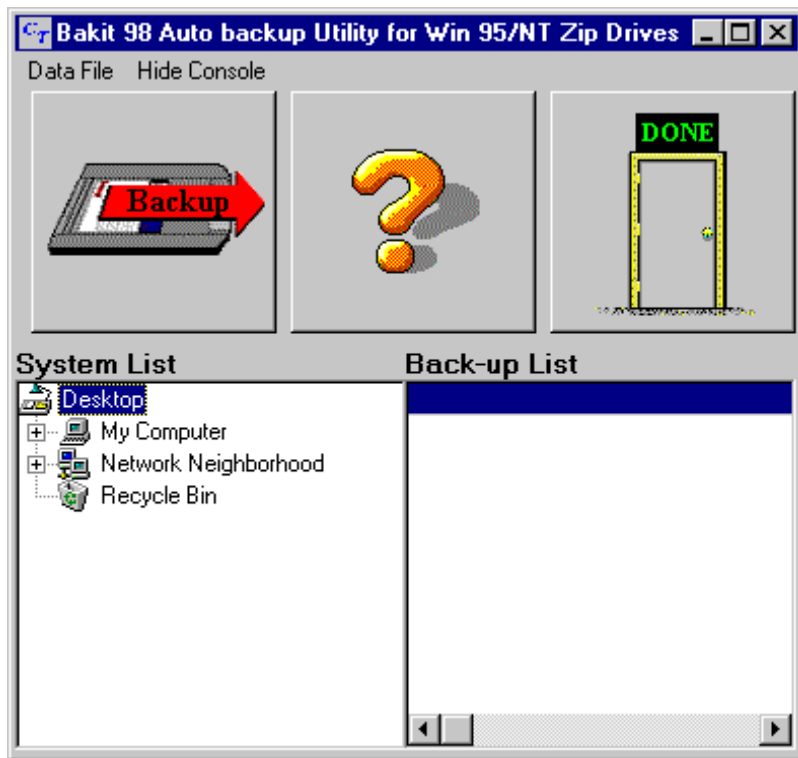
Show Console: Shows the console window where the user can perform program operations.

Back Up Now: This option will immediately back up the directories on the current list to the Zip drive.

Disable/Enable: This menu item will change its name every time it is clicked. If the option reads "Enable" the program is currently in Disabled state, the padlock will be shown with a red circle and line through it, and the if user clicks the menu option, the caption will change to "Disable" and the program will be enabled. So whatever state the program is in will be the opposite of the menu caption.

Exit: Completely exits the program.

The Console Window



Explanations:

The "Data File" menu allows the user to Open, Save, Save As a New File, or Close the currently open Data File.

The "Hide Console" menu option does just that, closes the console window.

The "Backup" button will back up the current directory list when clicked.

The question mark button will load this help file. As previously stated, I am working on Windows context-sensitive help files.

The Done button will also hide the console window (Please note that it will not exit the program, this can only be done from the pop-up menu).

That's about it for now. as stated, this software is an Alpha version, and comments/feedback are greatly appreciated (be nice!).

strauman@babbage.csee.usf.edu

Please note that the program is Shareware, but it will not stop working or start harassing you with annoying messages at some future date. If you like the program, please register by sending \$5 (US) to me at:

John Straumann
12913 Arbor Isle Drive
Temple Terrace, FL 33637

Perhaps more importantly, if you do like the program and find it useful, please send a message to Iomega at ilovezip@iomega.com and tell them all about it!

The registration fee will entitle you to all future updates of the software (sent by email, if you require mail shipping, charges will apply).

Thanks and I hope to hear from you.